

Learning Review - Information for Families and Carers



Protecting children and young people is the responsibility of several different organisations such as Social Work, Health, Education, Police and others who support children and families.

In each local authority, there is a Child Protection Committee which is made up of a group of people who work for these organisations. In Shetland we have a Public Protection Committee that combines Child and Adult Support and Protection. This Committee ensures organisations and the local community work together to plan, carry out and improve the way the child protection process works.

What is a Learning Review - When is it needed?

When a child dies or is seriously harmed, or when a child was at risk of death or serious harm, the local Public Protection Committee must decide whether or not to look further into what happened.

Why does the Public Protection Committee do this?

To understand if there are any lessons to learn about the support offered to you and your family. The Committee looks at how people have worked together to support you and your family: for example social workers, GP's, teachers, health visitors, police etc. This is called a 'Learning Review'.



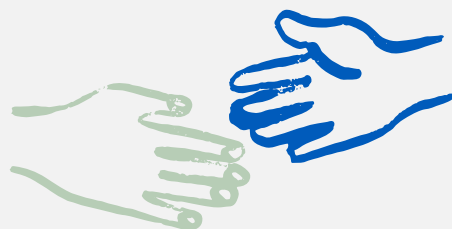
What happens during a Learning Review?

A person will be appointed as the Reviewer, they will speak to family members, professionals and other people who know/knew your child/ren to learn more about what happened and to suggest how to make things better in the future.

The Reviewer will be helped by a small group of people from other organisations. This group is called the 'Review Team'. Both the Reviewer and the Review Team will get information from organisations that have worked with you and your family. This will mean sharing information and records that they have about your child/ren and family. This information will only be shared with the Review Team and will remain confidential.

Support for You

- ① A member of the Review Team will contact you and be your link person. He or she will offer support and communicate with you during the review. This person is able to let you know what to expect, how the process is going and answer any questions you may have.
- ② You can also have other people to support you during this Learning Review process such as a friend, family member, support worker or advocacy service.
- ③ Some families who have gone through this same Learning Review process have told us the kind of information that helped them. Here are some of their questions and typical answers. Please remember each situation is different but some of these questions and answers might help you.



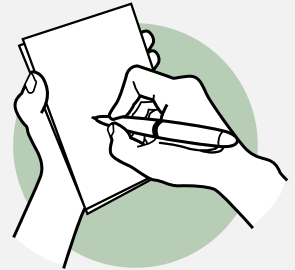
QUESTIONS AND ANSWERS

Q Can someone discuss this leaflet with me as I find it easier to talk with someone?

A Yes of course, a member of the review team can offer support to speak through the leaflet and the process. Your link person can do that or you can contact the Public Protection Committee for more support, their details are at the end of the leaflet.

Can someone write down key information that I need for the next stage so I do not forget it or get confused?

Your link person will be able to support you and may even suggest you have a small notebook to record the key information. You can have a supporter with you in any meetings and they could take notes for you. This will be your choice.



What does the review do that is different to the other services already involved?

The review is different. It is looking at the actions and responses from all the services involved and so these services can learn how to improve their practice.



How can the Learning review help me and my family?

It will give you an opportunity to tell what happened from your point of view and how that felt.

How do I know what is happening or what is going to happen next?

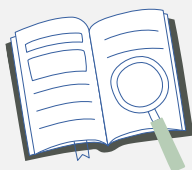
Your link person can help keep you updated so you know what is happening

Who are the people involved?

Your link person will be able to answer any questions about who is involved and any role that they have in the process.

What information from me will the Reviewer and Review Team use?

It may be that they do not use all the information you share with them. The Reviewer will make you aware if any information being used and you can ask about who will be able to see this.

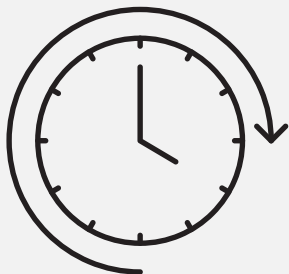


How will I hear what the Review decides?

Speak to your link person to hear about the learning and outcomes of the Review. They can provide information.

What if there is media interest? How do I handle media interest?

If there is any newspaper or media interest in the outcome of the Review your link person can support you through this. Given Shetland's small community Reviews are not normally shared publicly. The important thing is to take one day at a time and remember the purpose of a Review is to learn from our practice and it is not to appoint blame on anyone.



How long will the Learning Review take?

It is usually from 3-9 months from the start of the Learning Review to the final report. Sometimes it can take much longer and the person supporting you will speak about this if this happens.

Contact us

We understand that this is a very difficult time for you and your family.

We hope that this leaflet has helped you and your family to understand more about the Learning Review. Of course, each child / family is different, and you may have other questions you would like to ask us or you may want to talk further about the Review. If there is anything else, you would like to discuss then please contact us as follows.

Shetland Public Protection Committee
Lead Officer: Sandra Summers
email Sandra.summers2@shetland.gov.uk
Tel: 01595 744435

Lead Reviewer

individual details of the reviewer would be provided direct to any family members